



**FORTIFIED POWER,
STRENGTH IN DESIGN.**

**Introducing
THE ECO BUS**



GEYUSHI



FORGING AHEAD WITH **THE ECO**

FROM GEYUSHI AUTOMITIVE INDUSTRY

THE ECO — the zenith of sustainable and safe public transit. Powered by a sophisticated electric drivetrain complemented by an ultra-quiet motor from a leading global supplier, it delivers an unparalleled smooth journey. Safety and performance go hand-in-hand in **THE ECO**. A state-of-the-art battery cooling system not only ensures consistent performance but also extends battery life, maximizing efficiency over extended periods. The bus's low-entry design caters to all, especially benefiting those with mobility challenges. With **THE ECO**, Geyushi is setting new benchmarks in clean, accessible, and dependable transportation.

THE ECO



IN MOBILITY.



EXTERIOR DESIGN

Geyushi's **THE ECO** stands as a beacon of modern design infused with user-centric features. Its low-entry design, complemented by an integrated ramp at the central door, ensures effortless boarding for individuals with mobility needs as well as parents with baby strollers. Electric-powered doors, both front and center, facilitate smooth ingress and egress. Highlighting its contemporary design, the bus features LED head and tail lights, providing optimal visibility. Prominently displayed destination panels keep passengers awaiting in the bus stop informed about its route from an adequate distance with high visibility.



THE ECO stands as a beacon of urban transit excellence. Meticulously engineered, it boasts a formidable 420 km range, enriched by cutting-edge regenerative braking that captures and repurposes energy with each deceleration. Its sophisticated dual-port charger restores the bus to peak power in a mere 3 hours, epitomizing operational efficiency. With an avant-garde suspension system, passengers are ensured an unparalleled ride smoothness, even amidst the hustle of city streets.



**BUS INTERIOR
DESIGN.**



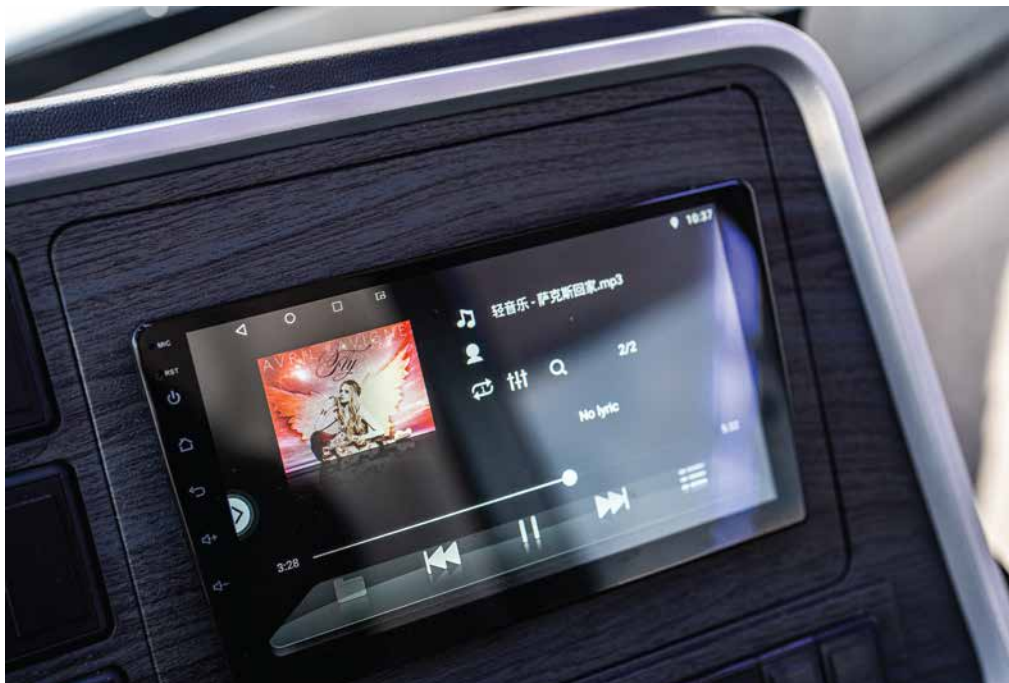
Inside Geyushi's **THE ECO**, the driver benefits from a dedicated cabin, thoughtfully designed to enhance focus and comfort during transit. Prioritizing inclusivity, a designated space is available for wheelchair users, ensuring they travel with ease and security. With a generous passenger capacity of up to 88 individuals, the bus is equipped to handle peak transit times efficiently. For added convenience, stop buttons are strategically placed, allowing passengers to signal their desired stops effortlessly. To cater to the modern traveler's needs, USB chargers are interspersed throughout the cabin, ensuring devices remain powered throughout the journey. Every feature within **THE ECO** underscores a commitment to passenger comfort, safety, and connectivity.



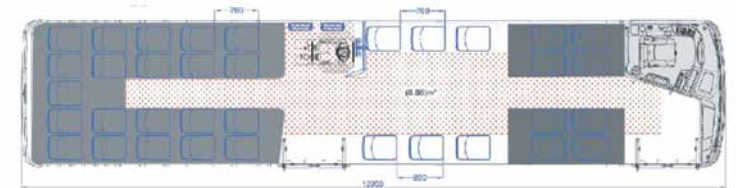
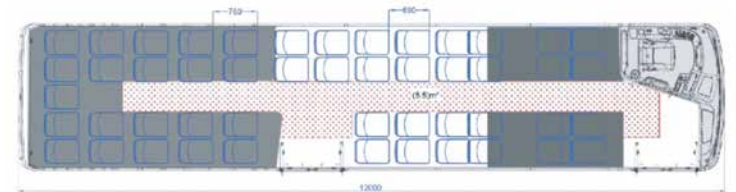
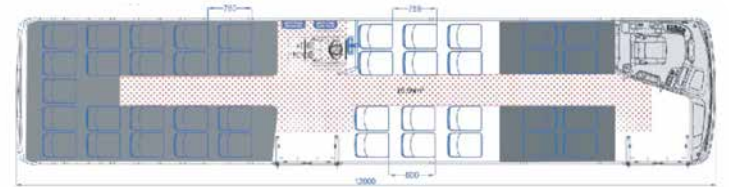
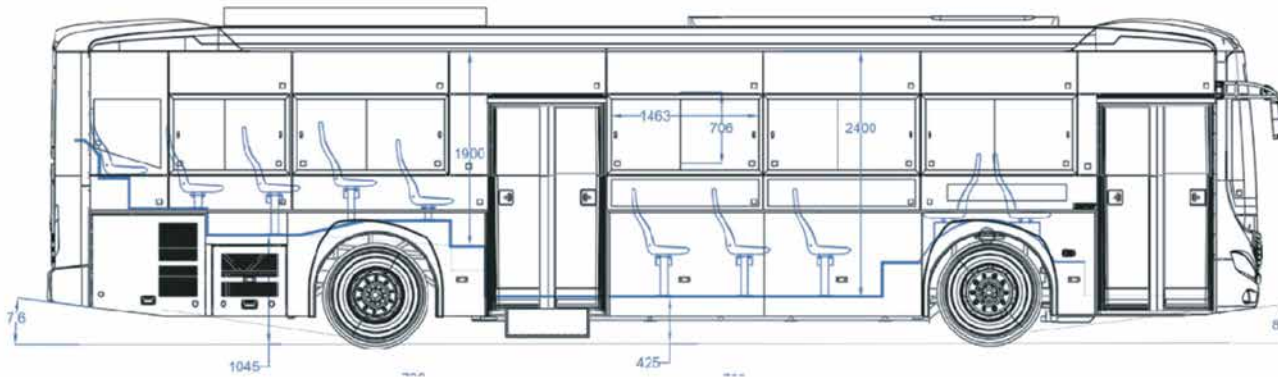
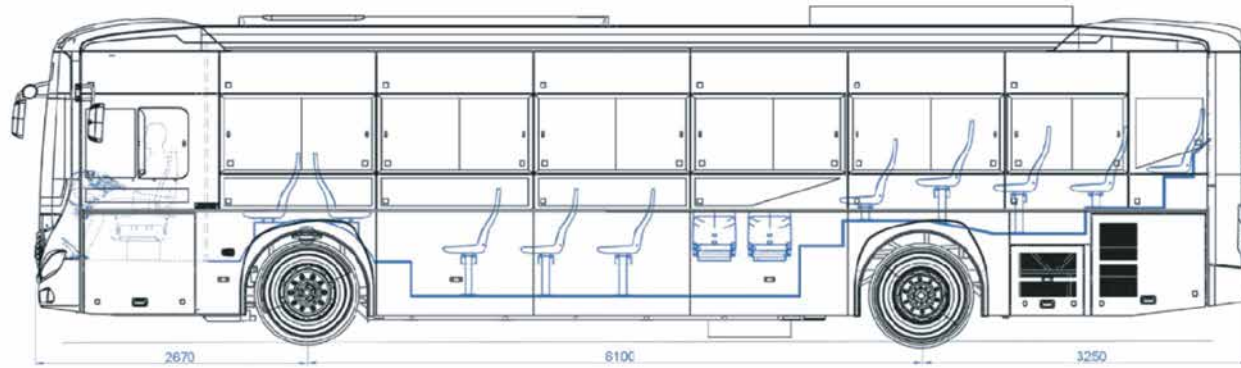
**INCREASED
CONNECTIVITY**



**ADDED
FEATURES.**



LAYOUT



Specification

Specifications	
Lenght	12000 mm
Width	2550 mm
Height	3300
Inner Height	From 1900 to 2400 mm
Wheel Base	6100 mm
Depature & Approach Angles	8.5° /7.5°
First Step Height	360 mm
GVW	19600 kg
Passenger Capacity	up to 49 chairs
Maximum Speed	80 km
Batteries	
Type	CATL: (Lithium Iron Photsphate) LFP
Batteries Position	Under the back half of the bus and on the roof
Total Capacity	373 KWH
Cooling System	Using Coolant



Headquarter

340 South Ninety st. New Cairo, Cairo, Egypt.

Factory

Industrial Zone A3, 10th Of Ramdan, El-Sharkia Governate, Egypt.



www.geyushi.com

info@geyushi.com